



**TheCaseSolutions.com**

Number 1 in case studies solutions

# SONGY 2011







# *Introduction*

**The Songy 2011 case focuses on the analysis of the key decisions in the centre of the real estate development and investment company acting in the conditions of crisis. This article reveals the SWOT analysis and recommendation strategies provided in dealing with the characteristics of the case.**



# *Strategic Asset*

**A reassessment of all the current investments to determine which ones have failed to meet expectation, and which other areas needs to be explored for more investment.**





# *Leveraging Partnerships*

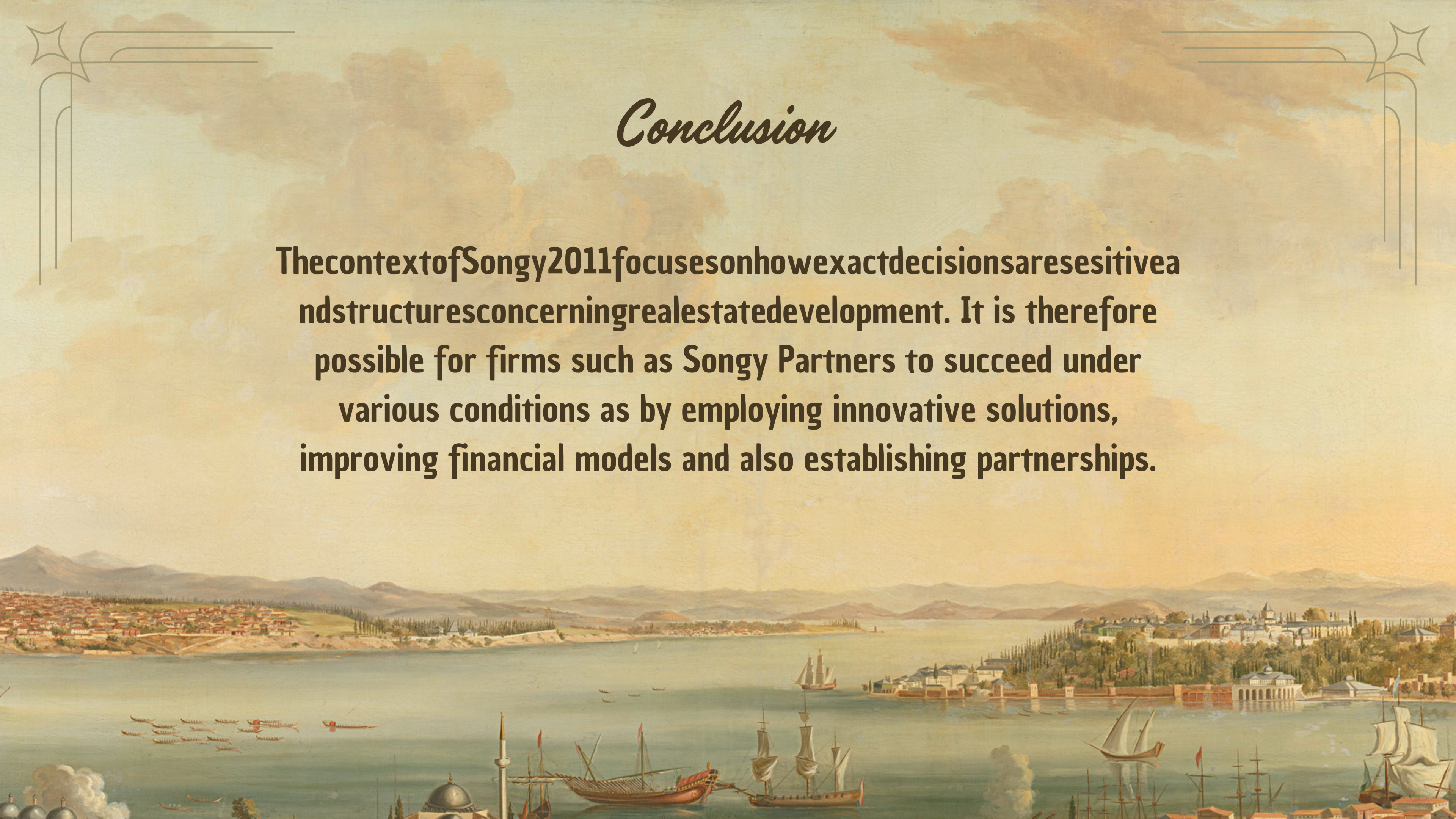
**They enter strategic partnerships and joint ventures to decide on potential risks on financial sources while at the same time increasing market coverage.**





# *Conclusion*

**The context of Songy 2011 focuses on how exact decisions are sensitive and structures concerning real estate development. It is therefore possible for firms such as Songy Partners to succeed under various conditions as by employing innovative solutions, improving financial models and also establishing partnerships.**







## *Resource*

**This case is just a sample partail case solution. Please place the order on the website to order your own orignally done case solution.**

**Resource: Visit [thecasesolution.com](http://thecasesolution.com) for detailed analysis and more case studies.**