



**TheCaseSolutions.com**

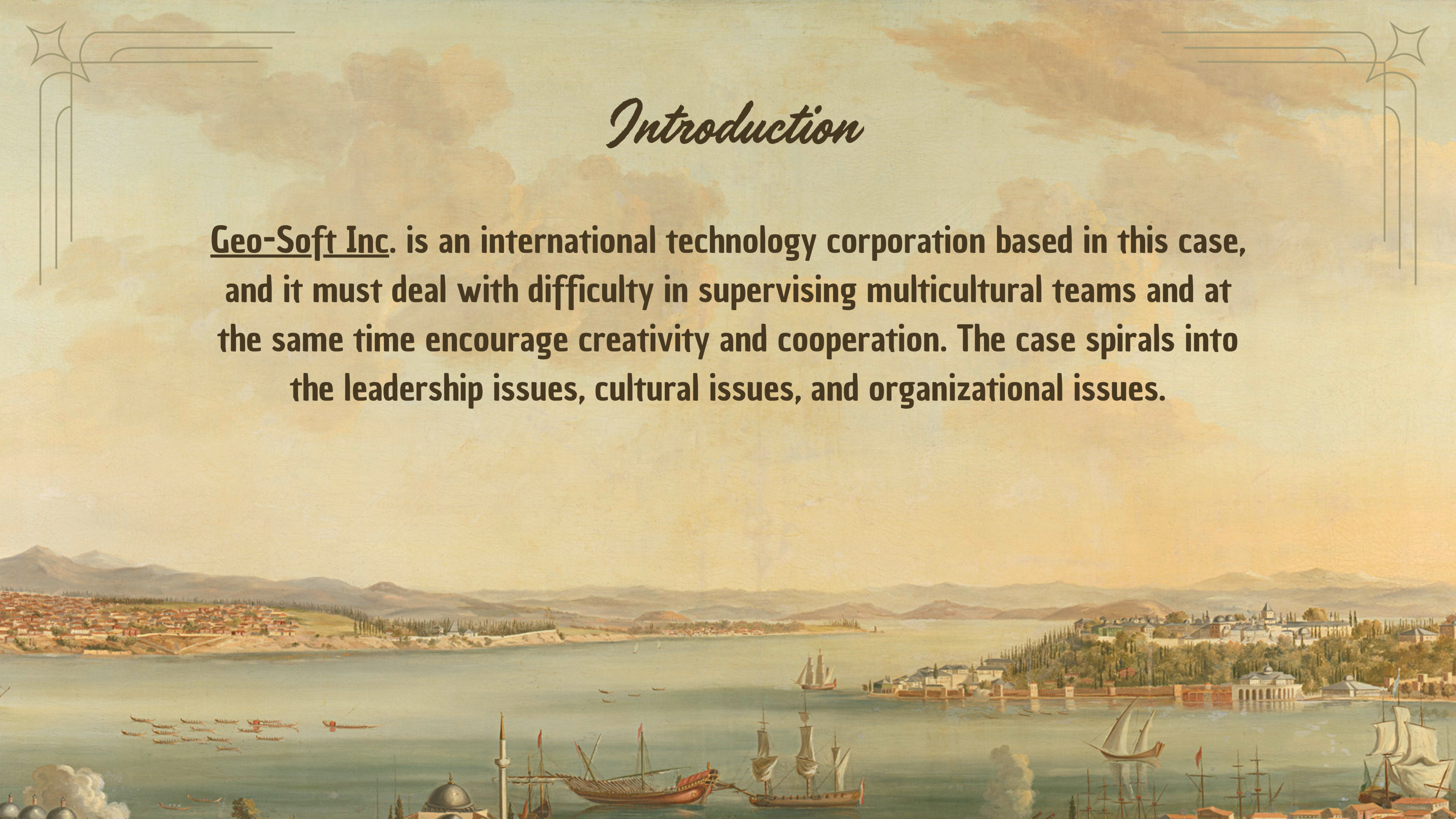
Number 1 in case studies solutions

# **GEO-SOFT INC.: LEADING ACROSS CULTURES**



# *Introduction*

**Geo-Soft Inc. is an international technology corporation based in this case, and it must deal with difficulty in supervising multicultural teams and at the same time encourage creativity and cooperation. The case spirals into the leadership issues, cultural issues, and organizational issues.**



# *Cultural Interactions*

**There is always a conflict of culture, which affects the entire flow and mannerism in decision making and operations in Geo-Soft Inc. Management in such a context becomes extremely sensitive owing to powerful cultural factors that need to be understood.**



# *Organizational challenges*

**The case also captures internal issues like  $\epsilon$  change resistance; and perception of work ethics. The mentioned hurdles can be solved with an employee development plan, recommendations to conduct more frequent feedback, and the implementation of more flexible work arrangements.**



The background of the slide is a detailed historical painting of a coastal city, likely Constantinople, during the late Middle Ages or early modern period. The scene shows a large harbor filled with various sailing vessels, including galleons and smaller boats. In the foreground, several large wooden sailing ships with multiple masts and sails are visible. The city is built on a hillside overlooking the water, with numerous buildings, domes, and a prominent mosque with a tall minaret. The sky is filled with soft, golden light, suggesting a sunset or sunrise. The overall style is characteristic of 17th-century European landscape painting.

# *Conclusion*

**Organisation of Geo-Soft Inc. can implement an excellent chance to become an example of the successful management of multinational project teams. Cultural intelligence, inclusive leadership, and timescales reveal the company's global opportunity to address organizational issues.**

The background is a detailed historical painting of a harbor. In the foreground, several large wooden sailing ships with multiple masts and white sails are docked or moving through the water. To the left, there are smaller, simpler boats. In the middle ground, a large body of water stretches across the scene. In the background, a city with numerous buildings, domes, and minarets is visible on a hillside, overlooking the harbor. The sky is filled with soft, golden-brown clouds, suggesting a sunset or sunrise. The overall style is that of a classical oil painting.

# *Resource*

**This case is just a sample partail case solution. Please place the order on the website to order your own orignally done case solution.**

**Resource: Visit [thecasesolution.com](http://thecasesolution.com) for detailed analysis and more case studies.**